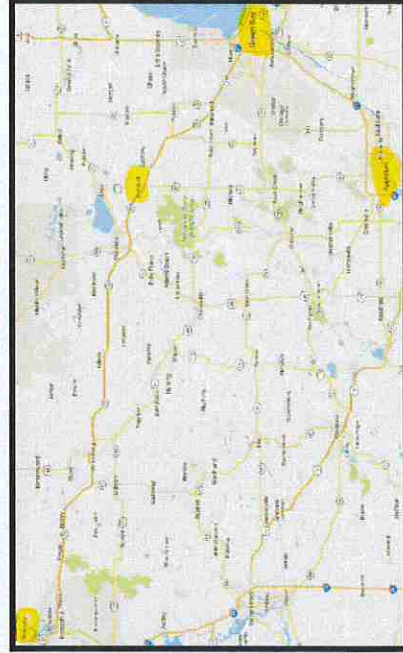


## Distance

- ◆ Approximately 30 miles—Bonduel to Green Bay
- ◆ Approximately 35 miles—Bonduel to Appleton
- ◆ Approximately 71 miles—Bonduel to Wausau

### **Hwy 29/47 Commercial Lots**

- ◆ Newly created commercial sub-division in the Village of Bonduel
- ◆ Highway and frontage road sites available with excellent exposure
- ◆ Easy on/off ramps to Hwy 29/47
- ◆ Convenient access to Green Bay, Appleton and Wausau
- ◆ Utilities and streets in place

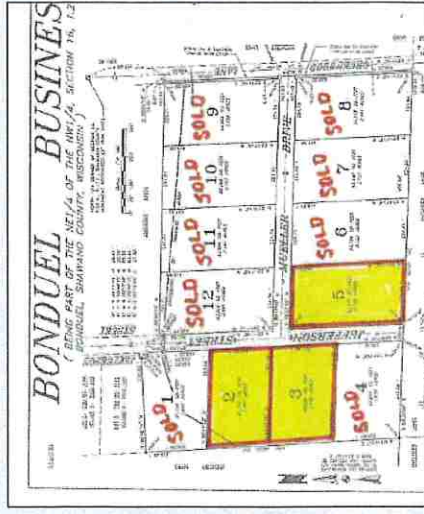


## **COLDWELL BANKER REAL ESTATE GROUP**

Terry N. Hilgenberg  
105 S. Washington St.  
Shawano, WI 54166

**715-526-6148 ~ 800-236-1550**

[www.ColdwellHomes.com](http://www.ColdwellHomes.com)



### **Bonduel Business Park**

- ◆ Fully improved office and industrial lots
- ◆ Wooded area creates a park like setting ideal for a professional site
- ◆ Convenient to Hwy 29/47 interchange
- ◆ Approximately 30 miles west of Green Bay with easy access to Appleton and Wausau
- ◆ Lots range from 1.877—2.145 Acres
- ◆ Affordably priced at \$10,000/Acre



# VILLAGE OF BONDUÉL

*Gateway to Recreation*

## COMMERCIAL and BUSINESS / INDUSTRIAL SITES



Coldwell Banker  
Real Estate Group

105 S. Washington St.  
Shawano, WI 54166

### Business Park

Lot 2—311 S Jefferson St - Approximately 1.877 Acres  
\$18,770

Lot 3 - 321 S Jefferson St - Approximately 1.902 Acres  
\$19,020

Lot 5—400 Mueller Dr - Approximately 2.145 Acres  
\$21,450

### Hwy 29/47 Commercial Lots

Lot 2—525 Commerce Ct - Approximately 1.55 Acres  
\$85,500

Lot 11—106 W Express Way - Approximately 1.59 Acres  
\$79,400

## "Bonduel Business Park and Hwy 29/47 Commercial Lots"

- Fully improved office and industrial lots
- Newly created commercial sub-division offers convenient access to Green Bay, Appleton and Wausau

### Directions

Business Park

Hwy 29 East to Hwy 117 North to corner of Hwy 117 and Green Bay Street right to Jefferson Street, South to lots

Hwy 29/47 Commercial Lots

Hwy 29 East to Hwy 117 North to Express Way left to Progress Street left to lots.